



### Adaptability and performance

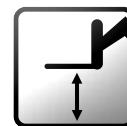
- Optimised load rating
- Hydraulic control for standard accessories
- Tilt corrector as standard

### Power and precision

- Standard hydrostatic transmission
- Simultaneous and proportional controls of all 4 movements of the boom with flow sharing

### Safety and reliability

- Standard rear axle locking
- Dangerous movements cut out switch



Placing height : 17m



Maximum lift capacity :  
4000 kg

**Haulotte**   
GROUP  
More than lifting



# HTL 4017



TELEHANDLER

Placing height : 17m

Maximum lift capacity : 4000 kg



## PERFORMANCES

Maximum lift capacity	4000 kg
Lift capacity to full height	2500 kg
Lift capacity at full reach	700 kg
Maximum fork height	17.2 m
Reach at maximum fork height	2.4 m
Maximum forward reach	12.85 m



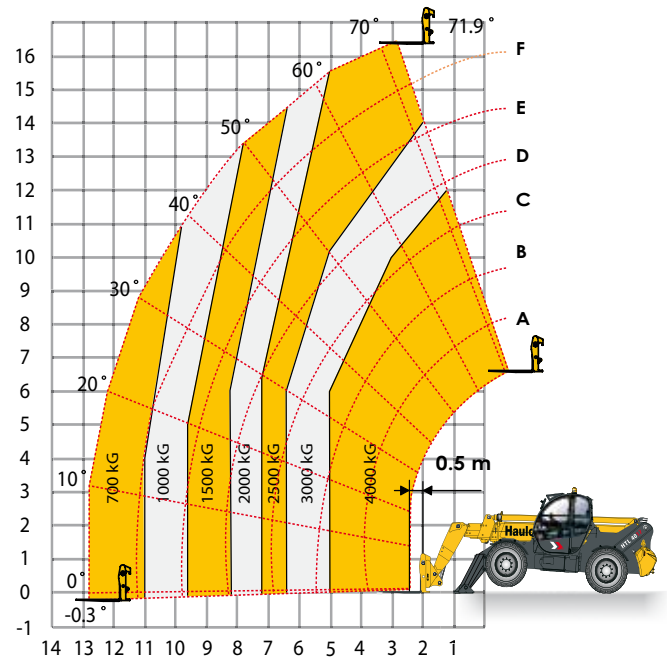
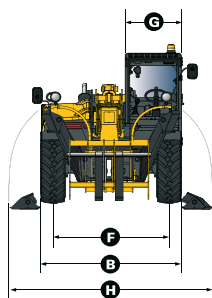
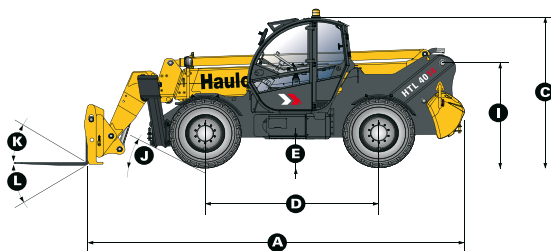
## DIMENSIONS

<b>A</b> Length	6.76 m
<b>B</b> Width	2.43 m
<b>C</b> Height	2.67 m
<b>D</b> Wheelbase	2.9 m
<b>E</b> Ground clearance	50 cm
<b>F</b> Track width	1.93 m
<b>G</b> Cab width	0.96 m
<b>H</b> Overall width - stabilizers down	3.34 m
<b>I</b> Height to high boom pivot	1.75 m
<b>J</b> Approach angle	29°
<b>K</b> Upper rotation of forks	18°
<b>L</b> Lower rotation of forks	104°
Weight with forks	12320 kg
Tyres type	18 - 22,5 TMR4



## ENGINE

Engine model	Deutz BF04M2012
Engine Capacity	4038 cm3
Engine power output	74,9 kW / 102 CV
Engine torque	0
Transmission type	Hydrostatic
Fuel tank	132.5 l
Engine oil	10 l



## STANDARD EQUIPMENT

- Hydrostatic transmission with variable capacity pump and engine
- 4 wheel drive and steer
- Fuel filter with water separator
- Load sensing equipment pump
- Flow-Sharing electrically controlled controls
- Proportional controls for movement of boom/telescopic arm / excavation and accessories
- Safety valves on hydraulic jacks
- Possibility to combine mast/telescopic boom/excavation and accessories movements
- Auxiliary hydraulic ports
- Overload/dangerous movements cut out switch
- Tilt corrector: +/- 10°
- Long stabilizers and large footplates for greater stability
- ROPS/FOPS cabin with heating and ventilation
- Hydraulic axle locking

## OPTIONS AND ACCESSORIES

- Cold Weather Package
- Biodegradable oil
- Cold environment oil
- Hot environment oil
- Air conditioning
- Working lights
- Metal windscreen protector (FOPS)
- 4-in-1 bucket: 1m3 or 0.75m3

