

### Specifications

Models	Z-51/30J RT	
Measurements	Metric	US
Working height maximum*	17.59 m	57 ft 8 in
Platform height maximum	15.59 m	51 ft 2 in
Horizontal reach maximum	9.37 m	30 ft 9 in
Up-and-over clearance maximum	7.39 m	24 ft 3 in
<b>A</b> Platform length	0.76 m	2 ft 6 in
<b>B</b> Platform width	1.83 m	6 ft
<b>C</b> Height - stowed	2.13 m	7 ft
<b>D</b> Length - stowed	7.58 m	24 ft 11 in
<b>E</b> Width	2.29 m	7 ft 6 in
<b>F</b> Wheelbase	2.03 m	6 ft 8 in
<b>G</b> Ground clearance - centre	0.375 m	1 ft 3 in

### Productivity

Lift capacity	227 kg	500 lbs
Platform rotation	160°	160°
Vertical jib rotation	135° (+78°/-57°)	
Turntable rotation	355° non-continuous	
Turntable tailswing	zero	zero
Drive speed - stowed	8 km/h	5 mph
Drive speed - raised**	30 cm/s	1 ft
Gradeability - 4WD - stowed***	45%	45%
Turning radius - inside	1.68 m	5 ft 6 in
Turning radius - outside	4.50 m	14 ft 9 in
Controls	12 V DC proportional	
Tyres	315/55 D20 foam filled	

### Power

Power source	Deutz D2011 L03i 3 cylinder diesel 49 hp (35.8 kW)	
Auxiliary power unit	12 V DC	12 V DC
Hydraulic tank capacity	90.9 L	24 gal
Fuel tank capacity	64.4 L	17 gal

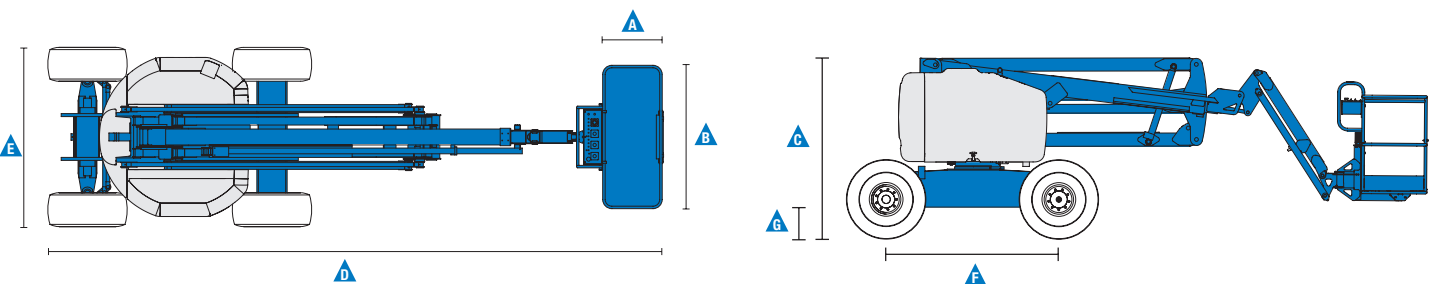
### Sound & Vibration Levels

Sound pressure level (ground workstation)	86 dBA	86 dBA
Sound pressure level (platform workstation)	79 dBA	79 dBA
Vibration	<2.5 m/s <sup>2</sup>	<8 ft 2 in/s <sup>2</sup>

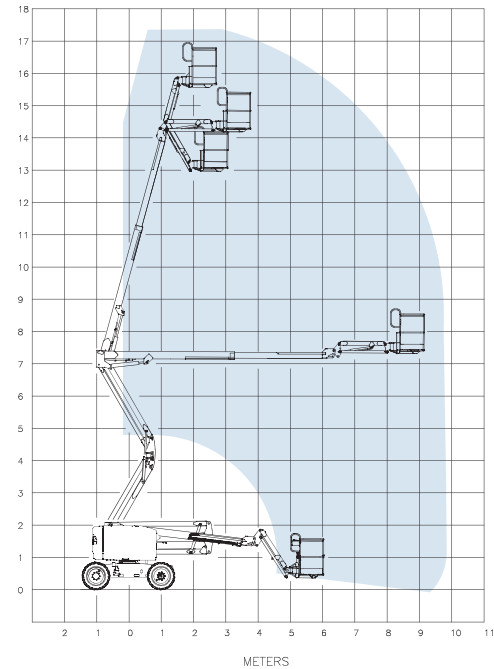
### Weight\*\*\*\*

7,394 kg	16,300 lbs
----------	------------

**Standards Compliance** EU Directives: 2006/42/EC - Machinery (harmonized standard EN280:2001+A2:2009); 2004/108/EC (EMC); 2000/14/EC (Outdoor Noise)



### Range Of Motion Z-51/30J RT



\* The metric equivalent of working height adds 2 m to platform height. U.S. adds 6 ft to platform height.  
 \*\* In lift mode (platform raised), the machine is designed to operate on firm, level surfaces only.  
 \*\*\* Gradeability applies to driving on slopes. See Operator's Manual for details regarding slope ratings.  
 \*\*\*\* Weight will vary depending on options and/or country standards.

### Features

Standard Features	Easily Configured To Meet Your Needs	Options & Accessories
-------------------	--------------------------------------	-----------------------

#### Measurements

##### Z-51/30J RT

- 17.59 m (57 ft 8 in) working height
- 9.37 m (30 ft 9 in) horizontal reach
- 7.39 m (24 ft 3 in) up and over clearance
- Up to 227 kg (500 lbs) lift capacity

#### Productivity

- Self-levelling platform
- Hydraulic platform rotation
- Proportional controls
- Thumb rocker steering
- Drive enable
- AC power cord to platform
- Horn
- Hour meter
- Tilt alarm
- Descent & travel alarms
- Flashing beacon
- 355° non-continuous turntable rotation
- Positive traction drive
- Two speed wheel motors
- Hydraulic oil cooler
- Certified load sensor

#### Power

- 12 V DC auxiliary power
- Engine protection package
- Deutz intake air heater
- Swing out engine tray

#### Platform Options

- Steel 1.83 m (6 ft) (standard)

#### Jib Options

- Articulating 1.52 m (5 ft) jib boom

#### Power Options

- Deutz diesel 35.8 kW (49 hp)

#### Drive Options

- 4 x 4

#### Axle Options

- Active oscillation

#### Tyre Options

- Rough terrain foam-filled (standard)
- Rough terrain non-marking foam filled

#### Productivity

- Platform swing gate
- Half mesh platform inserts with swing gate
- Platform top auxiliary rail <sup>(1)</sup>
- Air line to platform
- Power to platform (incl. plug, socket and ground fault interrupt leakage on request)
- Work lights package (2 on chassis, 2 on platform)
- Biodegradable hydraulic oil
- Tilt cut-out option
- Track & Trace <sup>(2)</sup> (GPS unit providing machine location & operating information)
- Lockable platform control box cover
- Tool tray
- Operator Protective Structure
- Operator Protective Alarm

#### Power

- Diesel catalytic and spark arresting muffler
- Engine gauge package (oil pressure & temperature)
- AC generator packages (110V/60Hz - 220V/50Hz, 2200W, hydraulically driven)
- Deutz V-belt Generator kit (110V-220V)
- Low temperature cut-out module
- Engine heater option
- Refinery kit with spark arrestor and electric or mechanical Chalmers valve

<sup>(1)</sup> Not available with platform swing gate

<sup>(2)</sup> Includes a first 2 years subscription



### United Kingdom

The Maltings, Wharf Road, Grantham NG31 6BH, T: +44 800 988 3739 (toll free), Fax +44 (0)1476 584334, Email AWP-InfoEurope@terex.com  
Visit [www.genielift.co.uk/locations](http://www.genielift.co.uk/locations) to view our global locations list.

### Worldwide Manufacturing And Distribution

Australia • Brazil • Caribbean • Central America • China • France • Germany • Italy • Japan • Korea • Mexico • Russia • Southeast Asia • Spain • Sweden • United Arab Emirates • United Kingdom • United States

Effective Date: February, 2014. Product specifications and prices are subject to change without notice or obligation. The photographs and/or drawings in this document are for illustrative purposes only. Refer to the appropriate Operator's Manual for instructions on the proper use of this equipment. Failure to follow the appropriate Operator's Manual when using our equipment or to otherwise act responsibly may result in serious injury or death. The only warranty applicable to our equipment is the standard written warranty applicable to the particular product and sale and we make no other warranty, express or implied. Products and services listed may be trademarks, service marks or trade names of Terex Corporation and/or their subsidiaries in the USA and many other countries. Genie is a registered trademark of Terex South Dakota, Inc. © 2014 Terex Corporation.

