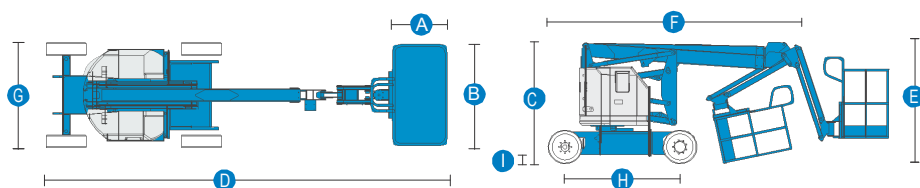
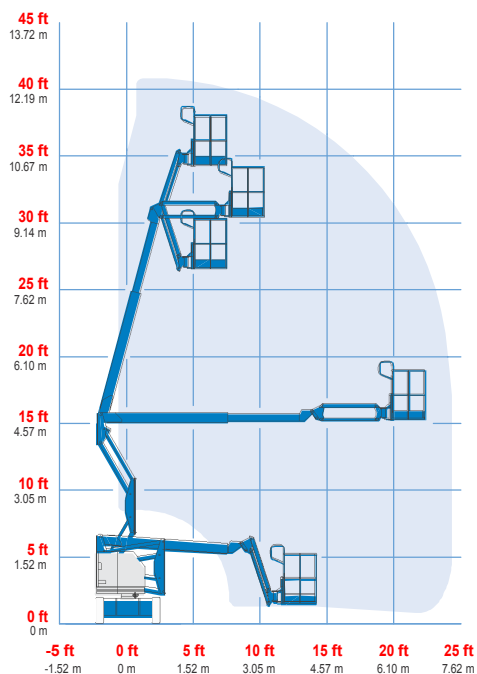


Specificatii:


DIAGRAMA DE MISCARE ZTM-34/22N

MODEL ZTM-34/22N

DIMENSUNI	Metric
Inaltimea maxima de lucru	12.52 m
Inaltimea maxima a platformei	10.52 m
Deport lateral la 4,57m	6.78 m
Regimul de lucru lateral maxim	4.65 m
A Lungimea platformei	76 cm
B Latimea platformei	1.42 m
C Inaltimea - stransa	2 m
D Lungimea - stransa	5.72 m
E Inaltimea depozitata	2.26 m
F Lungimea depozitata	4.19 m
G Latime	1.47 m
H Ampatament	1.88 m
I Garda la sol - centru	14 cm

PRODUCTIVITATEA:

Capacitatea de ridicare	227 kg
Rotatia platformei	180°
Rotatia verticala jib	139° (+72°/-67°)
Rotatia placii turnante	355° non-continua
Balansul posterior al turelei	zero
Viteza de deplasare - stransa	6.4 km/h
Viteza de deplasare - ridicata	1.1 km/h
Gradeabilitatea	35%
Raza de rotatie - interior	2.13 m
Raza de rotatie - exterior	4.10 m
Comenzi	24 V DC proportionale
Anvelope (cauciuc solid, fara urme,	56 cm x 18 cm x 45 cm

ENERGIE:

Motorizare	48 V DC (Opt baterii- 6 V capacitate de
Unitate de putere auxiliara	24 V DC
Capacitatea rezervorului	15.1 L

GREUTATE:

	5,171 kg
--	----------

