



Specificații

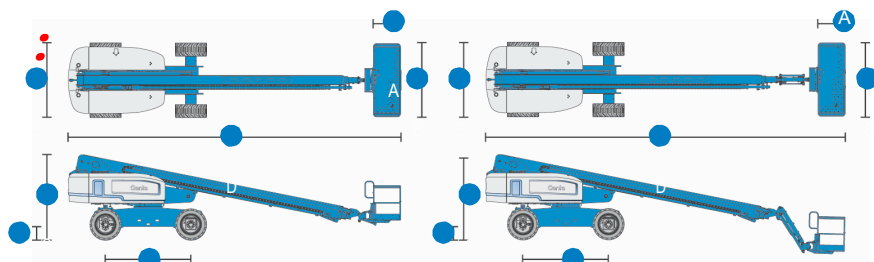


DIAGRAMA DE MISCARE STM-80

MODELE	S TM -80	S TM -85
DIMENSIUNI	Metric	Metric
Inaltimea maxima de lucru	26.38 m	27.90 m
Inaltimea maxima a platformei	24.38 m	25.90 m
Raza orizontala maxima a	21.79 m	23.32 m
Deportul negativ	1.85 m	2.90 m
A Lungimea platformei -8ft model	91 cm	76 cm
B Latimea platformei - 8 ft model	2.44 m	2.44 m
C Inaltimea - stransa	2.80 m	2.80 m
D Lungimea - stransa Lungimea - transport (jibul)	11.13 m —	12.19 m 11.58 m
E Latimea	2.49 m	2.49 m
F Ampatament	2.85 m	2.85 m
G Garda la sol - centru	33 cm	33 cm

100 ft
30.5 m

80 ft
24.4 m

60 ft
18.3 m

40 ft
12.2 m

20 ft
6.10 m

0 ft
0 m

-10 ft
-3.1 m

-10 ft
-3.1 m

0 ft
0 m

10 ft
3.1 m

30 ft
9.1 m

50 ft
15.2 m

70 ft
21.3 m

DIAGRAMA DE MISCARE STM-85

PRODUCTIVITATEA

Capacitatea de ridicare -6ft platform	227 kg	227 kg
Rotatia platformei	160°	160°
Rotatia verticala jib	—	135°
Rotatia placii turnante	360° continua	360° continua
Balansul posterior al turelei	1.42 m	1.42 m
Viteza de miscare - stransa	5.4 km/h	5.4 km/h
Viteza de miscare -	1.1 km/h	1.1 km/h
Gradeabilitatea - stransa 2WD	30%	30%
Gradeabilitatea - stransa 4WD	45%	45%
Raza de rotatie- axe extinse: interior	3.66 m	3.66 m
	6.55 m	6.55 m
Comenzi	12 V DC	12 V DC
Anvelope - RT lug	385/65 D22.5	385/65 D22.5

100 ft
30.5 m

80 ft
24.4 m

60 ft
18.3 m

40 ft
12.2 m

20 ft
6.10 m

-10 ft
-3.1 m

-10 ft
-3.1 m

30 ft
9.1 m

50 ft
15.2 m

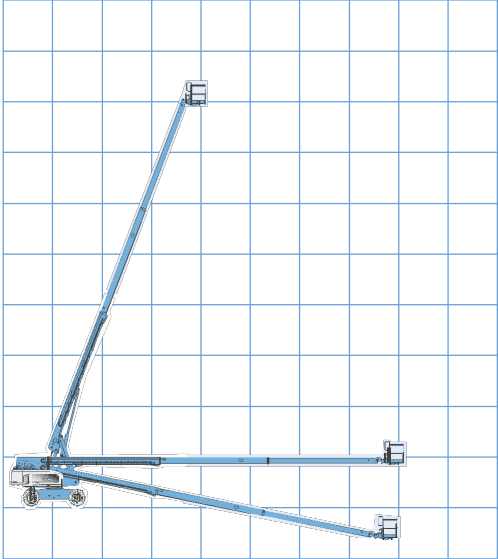
70 ft
21.3 m

ENERGIE

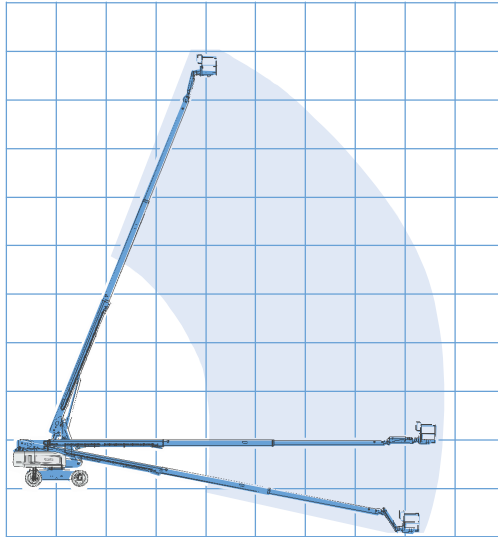
Motorizare	Deutz TD2011 L04i 4 cilindri diesel 74 hp (55 kW) Perkins 804D-33 4 cilindri diesel 63 hp (47 kW) Continental TME27 4 cilindri	
Unitate de putere	12 V DC	12 V DC
Capacitatea rezervorului	151 L	151 L
Capacitate combustibil -	132 L	132 L
Capacitate combustibil -	114 L	114 L

Greutate:

2WD	16,057 kg	17,191 kg
4WD	16,103 kg	17,237 kg



90 ft
27.4 m



90 ft
27.4 m

