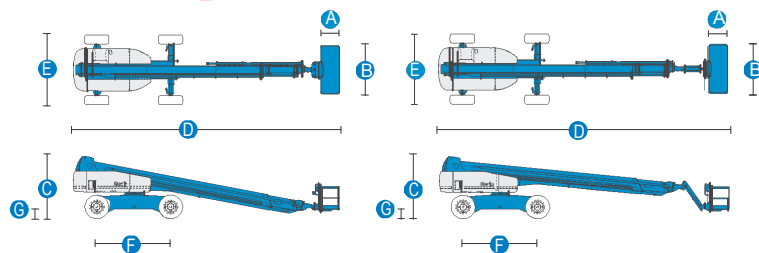




## Specificații:



MODELE	S <sup>TM</sup> -120	S <sup>TM</sup> -125
<b>DIMENSIUNI</b>	<i>Metric</i>	
Inaltimea maxima de lucru	38.58 m	40.15 m
Inaltimea maxima a platformei	36.58 m	38.15 m
Raza orizontala maxima a	22.86 m	24.38 m
Deportul negativ	1.98 m	3.27 m
<b>A</b> Lungimea platformei - 8 ft model	91 cm	91 cm
<b>B</b> Latimea platformei - 8 ft model	2.44 m	2.44 m
<b>C</b> Inaltime - stransa	3.07 m	3.07 m
<b>D</b> Lungime - stransa	13 m	14.25 m
Lungime - transport (jibul sub	—	12.17 m
<b>E</b> Latime - axe retractate	2.49 m	2.49 m
Latime - axe extinse	3.35 m	3.35 m
<b>F</b> Ampatament	3.66 m	3.66 m
<b>G</b> Garda la sol - centru	44 cm	44 cm
<b>PRODUCTIVITATEA</b>		
Capacitatea de ridicare	340 kg	227 kg
Rotatia platformei	160°	160°
Rotatia verticala jib	—	135°
Rotatia placii turnante	360° continua	360°
Balansul posterior al turelei- axe retractate	1.68 m	1.68 m
	1.24	1.24 m
Viteza de miscare - stransa	4.8 km/h	4.8 km/h
Viteza de miscare - ridicata/extinsa	1.1 km/h	1.1 km/h
Viteza de miscare- ridicata/extinsa peste	0.55 km/h	0.55 km/h
Gradeabilitate - stransa	40%	40%
Raza de rotatie- axe retractate:	4.01 m	4.01 m
interior	6.75 m	6.75 m
Raza de rotatie- axe extinse:	2.59 m	2.59 m
interior	5.74 m	5.74 m
Comenzi	12 V DC	12 V DC
Anvelope - RT lug	445/65 D22.5	445/65 D22.5
<b>ENERGIE</b>		
Motorizare	Deutz TD2011 L04i 4 cilindri diesel 75 hp (56 kW) Perkins 804-33T 4 cilindri turbo diesel 83 hp (62 kW) Cummins B3.3T 4	
Unitate de putere	12 V DC	12 V DC
Capacitatea rezervorului	208 L	208 L
Capacitate combustibil	151 L	151 L
<b>GREUTATE</b>		
	20,112 kg	20,248 kg

DIAGRAMA DE MISCARE S<sup>TM</sup>-120

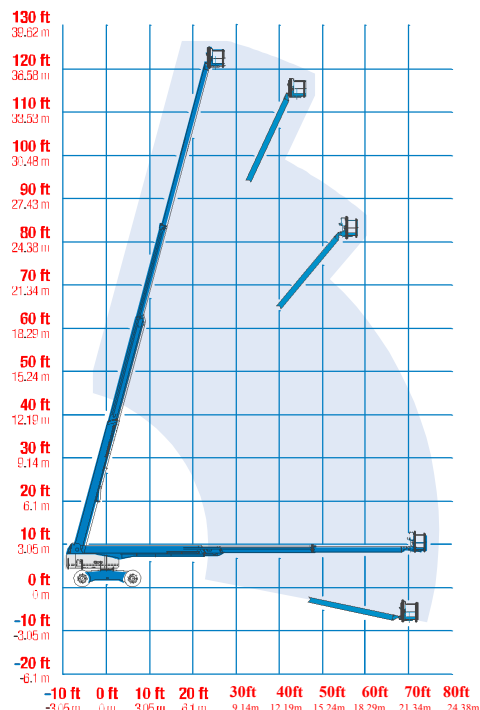


DIAGRAMA DE MISCARE S<sup>TM</sup>-125

