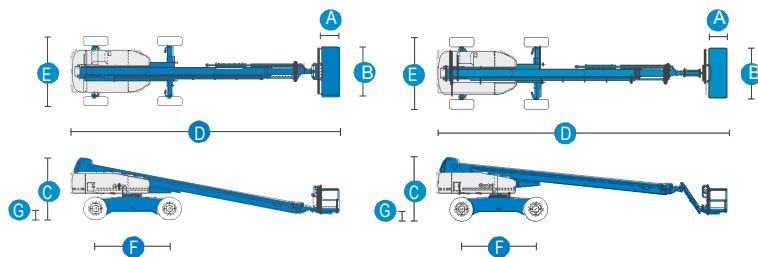


Specificații:



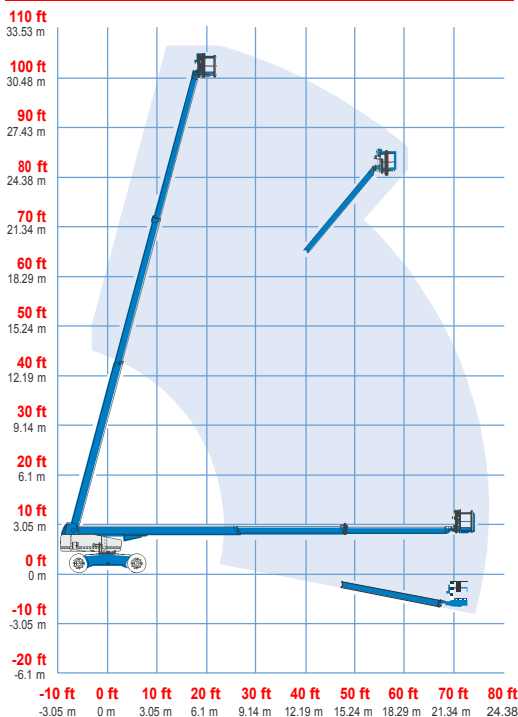
MODELE	S TM -100	S TM -105
DIMENSIUNI	Metric	
Inaltimea maxima de lucru	32.48 m	34 m
Inaltimea maxima a platformei	30.48 m	32 m
Raza orizontala maxima a	22.86 m	24.38 m
Deportul negativ	1.98 m	3.05 m
A Lungimea platformei - 8 ft model	91 cm	91 cm
B Latimea platformei - 8 ft model	2.44 m	2.44 m
C Inaltimea - stransa	3.07 m	3.07 m
D Lungimea - stransa	13.00 m	14.02 m
Lungimea - transport (jibul sub	—	12.17 m
E Latime - axe retractate	2.49 m	2.49 m
Latime - axe extinse	3.35 m	3.35 m
F Ampatament	3.66 m	3.66 m
G Garda la sol - centru	44 cm	44 cm

PRODUCTIVITATEA		
Capacitatea de ridicare	340kg	227 kg
Rotatia platformei	160°	160°
Rotatia verticala jib	—	135°
Rotatia placii turnante	360° continua	360°
Balansul posterior al turelei- axe retractate	1.68 m	1.68 m
	1.22 m	1.22 m
Viteza de miscare - stransa	4.8 km/h	4.8 km/h
Viteza de miscare - ridicata sau	1.1 km/h	1.1 km/h
Gradeabilitatea - stransa	40%	40%
Raza de rotatie- axe retractate:	4.14 m	4.14 m
- interior	6.58 m	6.58 m
Raza de rotatie - axe extinse: -	2.74 m	2.74 m
interior	6.05 m	6.05 m
Comenzi	12 V DC	12 V DC
Anvelope - RT lug	385/65D 22.5	385/65D 22.5

ENERGIE		
Motorizare	Deutz TD2011 L04i 4 cilindri diesel 75 hp (56 kW) Perkins 804-33T 4 cilindri turbo diesel 83 hp (62 kW) Cummins B3.3T 4	
Unitate de putere	12 V DC	12 V DC
Capacitatea rezervorului	208 L	208 L
Capacitate combustibil	151 L	151 L

GREUTATE		
	18,008 kg	18,144 kg

DINAMICA DE MISCARE STM-100



DINAMICA DE MISCARE STM-105

